

Kesgrave Against Expansion! (KAGE)

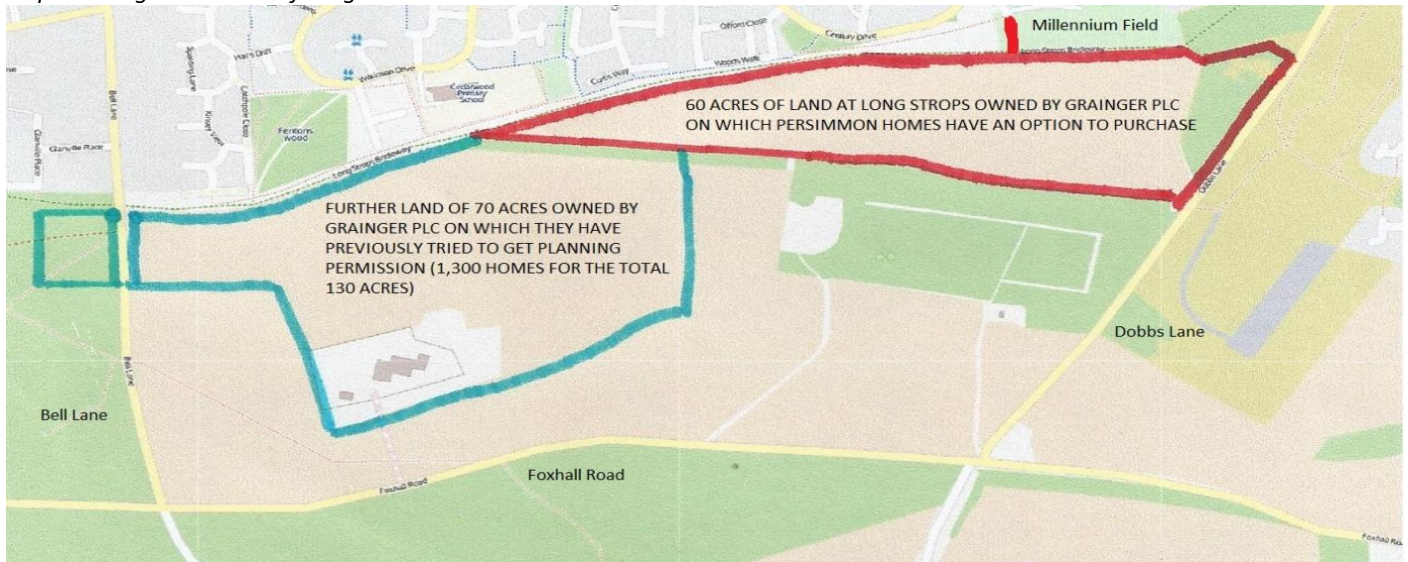
www.LongStrops.co.uk – visit our website for more info & to like us on Facebook

The field at Long Strops looks nice but it might not be here for long! Upset? Read on!



We need to help protect the identity of the town of Kesgrave and the interests of our community who have seen almost continuous house-building for the last 25 years. Our quality of life is threatened by the proposal of Persimmon Homes to build 300 new homes on the Southern edge of Kesgrave. If Persimmon's proposals are not rejected then is there not a danger that, in time, Grange Farm's Southern boundary will become Foxhall Road (instead of currently the bridleway bordering Long Strops & the Millennium Field) due to the urban sprawl?

Map showing area South of Kesgrave:



Giving just a few days notice, Persimmon and their agents, Savills, invited some residents of Grange Farm to an evening exhibition on Wednesday 6 February 2013 asking for feedback to be provided within a week. They say that all comments will be reviewed and that a Statement of Community Involvement will be submitted as part of the planning process summarising the comments received. **If you want to protect your quality of life and the identity of Kesgrave make sure you register your objections to the proposed plans NOW!**

A suggested response is set out below. Persimmon have asked for comments to be sent to:

William Lusty, Savills, Unex House, 132-134 Hills Road, Cambridge, CB2 8PA. Comments to arrive by **Friday 15 Feb.**

I wish to register my objections to the proposed plans by Persimmon Homes at Long Strops by Grange Farm. Kesgrave Town has reached its limit and any further expansion will affect my quality of life. There is already substantial pressure on facilities and the road network and this proposed development for 300 more homes will add to it.

Name: _____ Address: _____